

# SUMMER READING BINGO FOR ADULTS



|                                             |                                                |                                                         |                                         |                                                 |
|---------------------------------------------|------------------------------------------------|---------------------------------------------------------|-----------------------------------------|-------------------------------------------------|
| Read a really old book                      | Attend a library program!                      | Visit a museum                                          | Learn about PPLD's genealogy resources  | Try an online service with your library card!   |
| Make or share a memory with a friend        | View an exhibit at the library                 | Learn about the Library of Things                       | Attend two library programs!            | Tell someone about the library                  |
| Suggest a book or movie to someone else     | Visit a place accessible with a PPLD MAP Pass! | <b>FREE</b>                                             | Enjoy a dino-mite book or movie!        | Birdwatch! Birds are the last living dinosaurs. |
| Tell someone what your favorite dinosaur is | Learn something about history or archaeology   | Read a book or watch a movie set in another time period | Spend some time in nature               | Do something creative.                          |
| Dig around in the soil and plant something  | Organize something you've been putting off     | Attend three library programs!                          | Make a plan for something in the future | Get someone else to play Summer Reading Bingo!  |

**NAME:** \_\_\_\_\_

**PHONE OR EMAIL:** \_\_\_\_\_

# - RULES -

1. Complete the challenge any time from June 27 - August 14, 2025.
2. To complete the challenge, simply check off five squares that make an unbroken line either vertically, horizontally, or diagonally. You can interpret the prompts as you wish; one book or activity can count for multiple squares.
3. Once the requirements are fulfilled, return this sheet to any PPLD location (ground floor only at Adriance, or the check-out desk at either Boardman Road or SPD). You will then be entered into the drawing for a \$25, \$50, or \$100 gift card to Adams Fairacre Farms and some PPLD swag.

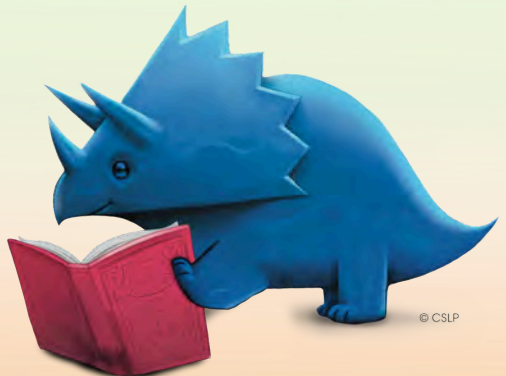
**Deadline to turn in your completed Bingo sheet is Friday, August 14. The drawing will take place on Monday, August 17.**

**NOTE: Completed game sheets will NOT be accepted on Rover.**

4. This challenge is open to patrons aged 18 and up. One entry per person.
5. If notified that you have won, you must respond and coordinate pick-up of your gift card by Wednesday, August 19. If either of these criteria is unmet, there will be another drawing until a winner is found.
6. PPLD staff members are not eligible to enter the drawing.
7. One entry per person will count toward the prize drawing.

**UNEARTH  
A STORY™**

**P P L D**



**With any questions, please contact Charlotte at [cmarriott@poklib.org](mailto:cmarriott@poklib.org) or (845) 485-3445 x3317.**